

**100**  
people  
engaged

**4**  
community  
events

### Social infrastructure and the process of mapping

The value of mapping local assets is primarily in the process. In asking questions about where different assets are located within a neighbourhood we have an opportunity to think differently about our neighbourhoods and to learn from others with deep local knowledge.

Mapping assets collaboratively across organisations can reveal knowledge and insights that may be hidden. It can be useful in pooling knowledge between individuals or partners who do not regularly work together, for sparking ideas and fresh thinking about how to develop local assets and to cut across the silos and structures that can inhibit innovative thinking.

**What do we mean by assets?** We include all the supports that residents use to meet their needs, to socialise, to take part in decision making, to have influence. This could include formal assets like libraries or community centres or informal groups or online networks.

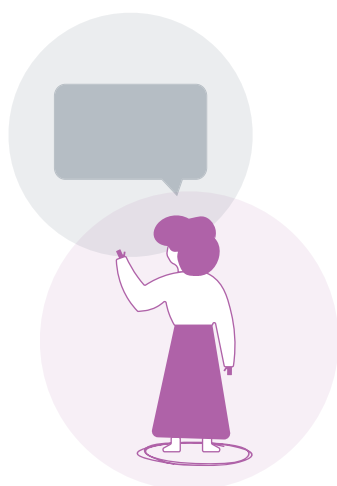
### Knowledge Quarter

The Knowledge Quarter maps are focused around the areas of Nechells, Newtown, Aston, Digbeth and Eastside, as well as the neighbouring areas. The first map demonstrates the density of social assets focused around Newtown and Nechells. Within the surrounding area there are more than 750 local employers which demonstrates the industrial and business nature of the area. The map shows major employers situated around the key transport corridors.

Nechells, Newtown and Digbeth emerge as the key clusters of social assets. Digbeth with focus on arts, culture and retail; Nechells and Newtown with a much stronger community and education focus. Nechells also hosts some key health facilities, serving the wider community. The map shows that there are few social assets enabling residents to have voice and influence. Green and blue infrastructure is identified as underused, the canals, river Rea and parks are disjointed and underutilised.

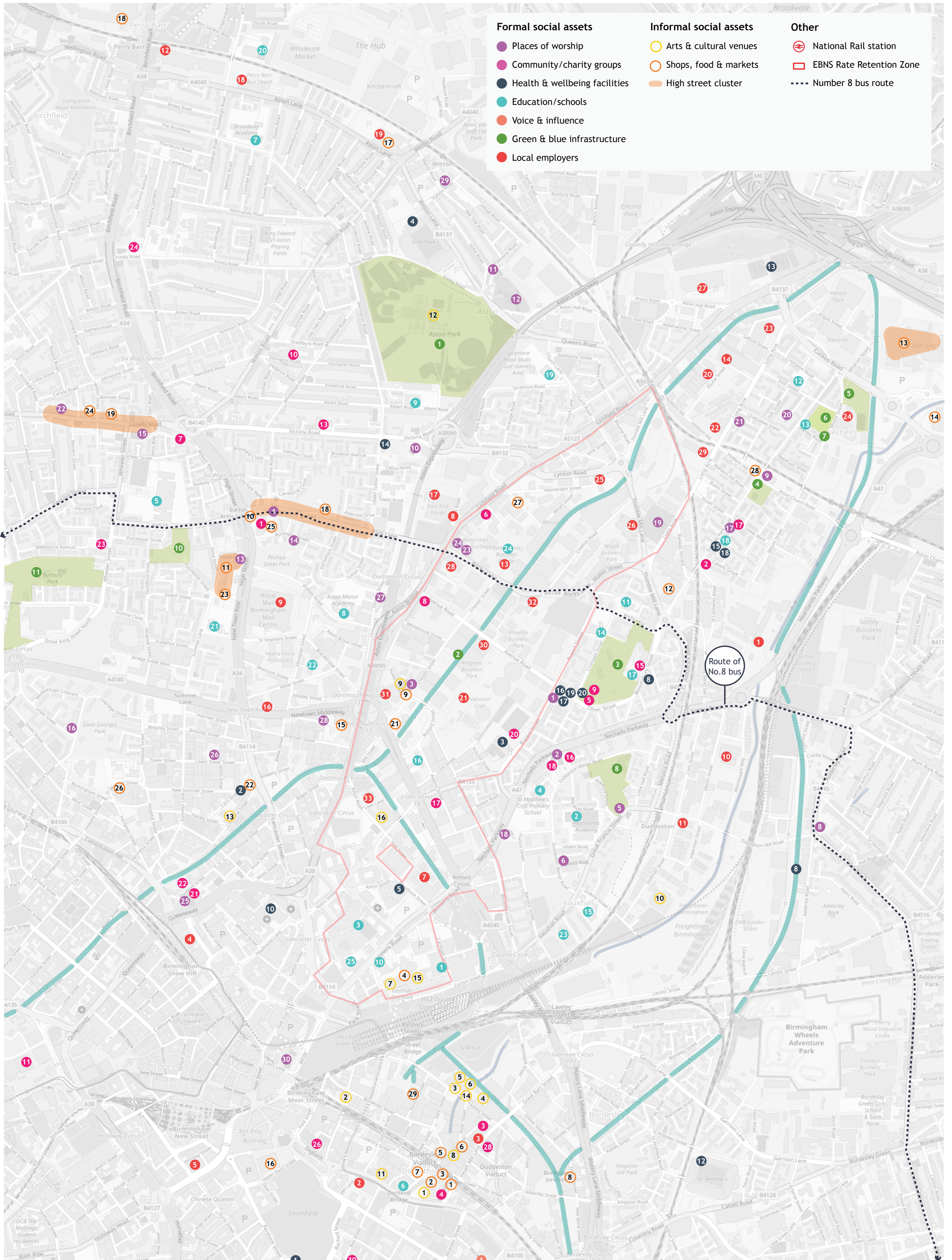
The second map shows the experiential and spatial definition of the area. It demonstrates how historic infrastructure (railways, major road arteries, canals and viaducts), as well as modern interventions (Birmingham Clear Air Zone, Hs2) dissect and sever historic communities. The radial and city centre focused developments create difficulties for local residents in terms of safety, transport accessibility and air quality.

The two major universities in the area - Aston and Birmingham City - are defined as separate entities, largely detached from each other and the communities they serve by major infrastructure.





# Coalition for Impact Knowledge Quarter



### Places of worship

1. Quba Islamic Centre
2. St Matthews Church Aston & Nechells
3. Anchor Point Church
4. As-Suffa Mosque
5. Nimab Welfare Trust
6. Attarbiya Masjid
8. Madina Masjid
9. The Wisdom Cultural Islamic Centre
10. Masjid-E-Noor (Birmingham)
11. Raza Mosque
12. Aston Parish Church
13. Zumunta Community Birmingham Masjid
14. COGIC ASTON
15. Redeemed Christian Church of God CRA Perry Barr
16. Huda Centre
17. Nechells Methodist Church
18. St Vincent RC Church
19. St Joseph RC Church
20. Ebenezer Mission Hall
21. Church of God of Prophecy
22. Universal Church of the Kingdom of God
23. New Jerusalem Community Church
24. Transformation Centre
25. St Chad's
26. Heaven Gate Centre
27. Mount Zion Community Church
28. RCCG CRA Birmingham (Covenant Restoration Assembly)
29. Shiloh Church
30. Carr's Lane Church

### Community/charity groups

1. Legacy Centre of Excellence
2. Free@last
3. Ace Dance & Music
4. BRIG (Birmingham Race Impact Group)
5. Nechells POD
6. Eloquent Dance
7. Lighthouse Youth Centre
8. Birmingham Children Trust
9. Bloomsbury Library
10. Aston Library

### Community/charity groups (continued)

11. Central Library
13. Bangladesh Multi Purpose Centre
15. Hope Centre
16. Scouts, Wardlow Road
17. Afterschool Club, Foodback at NMC
18. Foodbank at St Matthews
19. Reach Out Birmingham
20. City Of Birmingham Rockets Basketball Club
21. Midland Heart - Young People's Supported Accommodation Service Foyer
22. The Salvation Army Homeless Service Birmingham
23. Wallace Lawler Centre
24. Birchfield Library
26. The King's Trust Birmingham Centre
27. Positioning Youth to Prosper (PYP) CIC
28. St Basils
29. Muath Trust
30. Irish Centre
31. Islamic Relief

### Arts & cultural venues

1. Custard Factory
2. Vivid Projects
3. Grand Union
4. The Bond
5. Minerva Works
6. Centrala
7. Science Museum
8. Pan Pan
9. Infinite Arts
10. Museum Collection Duddeston
11. O2 Institute
12. Aston Hall
13. Robannas Studios
14. Digbeth Loc. Studios/Steven Knight Film Studios
15. Millennium Point
16. Virtual Decisions (formerly Round Midnight)

### Voice & influence

1. ISE - Initiative for Social Entrepreneurs

### Health & wellbeing facilities

1. Birmingham Depot (climbing)
2. Redpoint Centre (climbing)
3. Nechells Wellbeing Centre
4. Aston Villa FC
5. Woodcock Sports Centre, Aston Uni
8. Bloomsbury Medical Centre
10. Children's Hospital
12. Birmingham City FC
13. Powerleague
14. Victoria Road Medical Centre
15. St Clemens Surgery
16. Nechells Dentist
17. Focus Eye Clinic
18. Nechells Pharmacy
19. J Docter Pharmacy
20. Bloomsbury Pharmacy

### Education/schools

1. Birmingham City University
2. Heartlands Academy
3. Aston University
4. St Matthews CofE Primary School
5. Holte Secondary School
6. South & City College Birmingham
7. Broadway School Academy
8. Aston Manor Academy
9. King Edwards VI Aston School
10. BOA Creative Digital Performing Arts
11. St Joseph RC Primary
12. Nechells E-Act Primary School
13. St Clements Primary School
14. Cromwell Primary School
15. St Vincent's Primary School
16. Star King Solomon Academy
17. Bloomsbury Nursery
18. Time out after School Club
19. Manor Park Primary Academy
20. Eden Boys' School

### Education/schools (continued)

21. Chilwell Croft Academy
22. Miss Macaroon Training Academy Aston
23. Safeside
24. London School of Science & Technology (LSST Birmingham Aston Campus)
25. Birmingham Metropolitan College (BMET)

### Shops, food & markets

1. Kanteen Cafe
2. Change & Counters
3. Baked in Brick
4. Millennium Point Cafe - Mulino
5. Ruin Pub
6. Cafe LoveLife
7. Red Brick market
8. Roller Jam Digbeth
9. Rising Cafe (Anchor Point Church)
10. The Barton Arms
11. Newton Shopping Centre
12. Wing Yip
13. Star City
14. Costco
15. Matalan
16. Bull Ring Rag Market
17. Tesco, Aston
18. Park Lane Shops
19. Lozells Shopping Retail
20. ASDA Perry Barr
21. Hôtel Campanile
22. Samis Online Wholesale Cash & Carry
23. ALDI
24. Dixy Chicken Newtown
25. Reggae Bingo
26. Hockley Social Club
27. The Manor Tavern
28. Villa Tavern Pub
29. Latifs Cash and Carry

### Green & blue infrastructure

1. Aston Park
2. Birmingham canals
3. Bloomsbury Park
4. Hope Park
5. Mount Street
6. Eliot Street
7. Old Lady's
8. Loxton Park
9. Lea Hall Allotments & Institute
10. Clifford Street Public Open Space (Yellow Park)
11. Burbury Park and the Benjamin Zephaniah Forest

### Local employers

1. Smurfit Kappa
2. National Express HQ
3. Oval Estates
4. Hs2
5. Bruntwood
7. Birmingham Science Park
8. Lioncroft Wholesale
9. Royal Mail, Newtown
10. Greggs Birmingham Distribution Centre
11. Vauxhall Trading Estate
12. Perry Barr Job Centre
13. Aston Cross Business Village
14. Widney Manufacturing Ltd
16. Russell Printers
17. East End Foods
18. National Express Perry Barr Bus Depot
19. Tesco Superstore
20. Excellence Coaches Ltd
21. Cadent
22. RSS Infrastructure Ltd
23. DHL eCommerce Depot
24. FareShare (Food redistribution Charity)
25. Aston Manor Coaches
26. Aston Manor Cider Ltd
27. Hydraforce Hydraulics UK
28. The Self Storage Company, Aston
29. National Grid
30. JJ Foodservice
31. Autoglass Birmingham
32. Taroni's of Birmingham Ltd
33. iCentrum